

LANscape® Solutions for Xcelerated Bandwidth Applications LANscape Xcelerate™ and Xcelerate Plus™ Solutions



Corning
Cable Systems



MIC® and Unitized MIC Cable

LAN322



2-Fiber Zipcord Cable

CLT26



Rack-Mountable Closet Connector Housing

LAN325



FREEDM® Cable

LAN01



UniCam® MT-RJ, LC, SC Connectors

LAN133, 237, 139



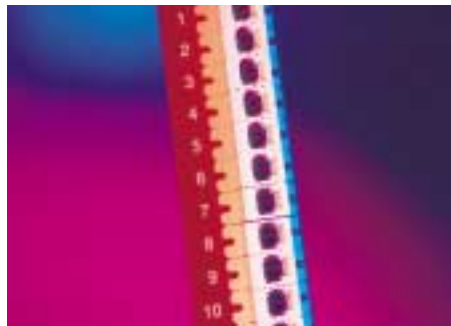
High-Density Plug & Play™ System Module

LAN324



Interlocking Armored MIC Cable

LAN326



CCH Connector Panel

LAN17

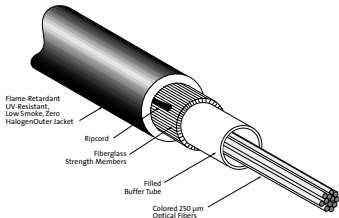


Plug & Play System

LAN323

LANscape® Solutions for Xcelerated Bandwidth Applications

LANscape Xcelerate™ and Xcelerate Plus™ Solutions



FREEDM/LST Cable

CPC-220/1/27

FIBER PERFORMANCE SPECIFICATIONS

	50 µm InfiniCor® 600 850/1300 nm	InfiniCor SX 150 850/1300 nm	InfiniCor SX+ 850/1300 nm
OFL BW (MHz • km)	500/500	1000/500	1500/500
Effective Modal Bandwidth (MHz • km)	510/—	1000/—	2000/—
Serial GbE Distance Guarantee (m)	600/600	750/600	1000/600
Serial 10 GbE Distance Guarantee (m)	82/—	150/—	300/—
Maximum Attenuation (dB/km)	3.5/1.5	3.5/1.5	3.5/1.5

InfiniCor 600 Part Number	InfiniCor SX 150 Part Number	InfiniCor SX+ Part Number	Description
------------------------------	---------------------------------	------------------------------	-------------

INDOOR/OUTDOOR CABLE

FREEDM/LST™ Cable

004CSF-14131A20	004SSF-14140A20	004SSF-14180A20	FREEDM/LST™ Cable, 4 fibers
006CSF-14131A20	006SSF-14140A20	006SSF-14180A20	FREEDM/LST Cable, 6 fibers
012CSF-14131A20	012SSF-14140A20	012SSF-14180A20	FREEDM/LST Cable, 12 fibers
018CSF-14131A20	018SSF-14140A20	018SSF-14180A20	FREEDM/LST Cable, 18 fibers
024CSF-14131A20	024SSF-14140A20	024SSF-14180A20	FREEDM/LST Cable, 24 fibers

FREEDM® Cable

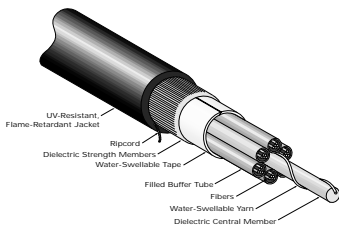
036CWF-14131A20	036SWF-14140A20	036SWF-14180A20	FREEDM® Cable, 36 fibers
048CWF-14131A20	048SWF-14140A20	048SWF-14180A20	FREEDM Cable, 48 fibers
072CWF-14131A20	072SWF-14140A20	072SWF-14180A20	FREEDM Cable, 72 fibers

Interlocking Armored FREEDM/LST Cable

004CSF-14131AA1	004SSF-14140AA1	004SSF-14180AA1	Interlocking Armored FREEDM/LST Cable, 4 fibers
006CSF-14131AA1	006SSF-14140AA1	006SSF-14180AA1	Interlocking Armored FREEDM/LST Cable, 6 fibers
012CSF-14131AA1	012SSF-14140AA1	012SSF-14180AA1	Interlocking Armored FREEDM/LST Cable, 12 fibers
018CSF-14131AA1	018SSF-14140AA1	018SSF-14180AA1	Interlocking Armored FREEDM/LST Cable, 18 fibers
024CSF-14131AA1	024SSF-14140AA1	024SSF-14180AA1	Interlocking Armored FREEDM/LST Cable, 24 fibers

Interlocking Armored FREEDM Cable

036CWF-14131AA1	036SWF-14140AA1	036SWF-14180AA1	Interlocking Armored FREEDM Cable, 36 fibers
048CWF-14131AA1	048SWF-14140AA1	048SWF-14180AA1	Interlocking Armored FREEDM Cable, 48 fibers
072CWF-14131AA1	072SWF-14140AA1	072SWF-14180AA1	Interlocking Armored FREEDM Cable, 72 fibers

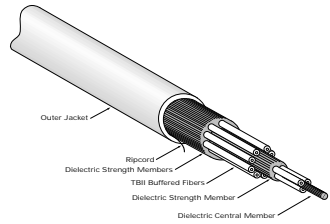


FREEDM Cable

CPC-220/1/24

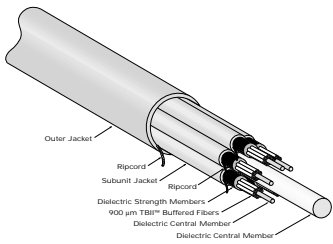
LANscape® Solutions for Xcelerated Bandwidth Applications

LANscape Xcelerate™ and Xcelerate Plus™ Solutions



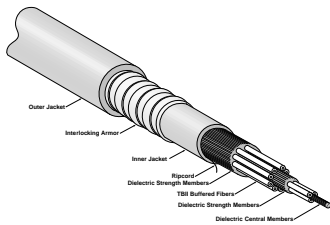
MIC Plenum Cable

CPC-220/1/39



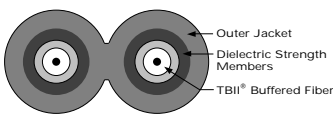
Unitized MIC Plenum Cable

ZA-2084



Interlocking Armored Unitized MIC Plenum Cable

ZA-2084



2-Fiber Zipcord Plenum Cable

CPC-220/1/56

InfiniCor® 600 Part Number	InfiniCor SX 150 Part Number	InfiniCor SX+ Part Number	Description
----------------------------	------------------------------	---------------------------	-------------

INDOOR CABLE

MIC® Plenum Cable

002C88-31131-29	002S88-31140-29	002S88-31180-29	MIC® Plenum Cable, 2 fibers
004C88-31131-29	004S88-31140-29	004S88-31180-29	MIC Plenum Cable, 4 fibers
006C88-31131-29	006S88-31140-29	006S88-31180-29	MIC Plenum Cable, 6 fibers
012C88-33131-29	012S88-33140-29	012S88-33180-29	MIC Plenum Cable, 12 fibers
018C88-33131-29	018S88-33140-29	018S88-33180-29	MIC Plenum Cable, 18 fibers
024C88-33131-29	024S88-33140-29	024S88-33180-29	MIC Plenum Cable, 24 fibers

Unitized MIC Plenum Cable

036C88-61131-29	036S88-61140-29	036S88-61180-29	Unitized MIC Plenum Cable, 36 fibers
048C88-61131-29	048S88-61140-29	048S88-61180-29	Unitized MIC Plenum Cable, 48 fibers
072C88-61131-29	072S88-61140-29	072S88-61180-29	Unitized MIC Plenum Cable, 72 fibers

Interlocking Armored MIC Plenum Cable

002C88-31131-A3	002S88-31140-A3	002S88-31180-A3	Interlocking Armored MIC Plenum Cable, 2 fibers
004C88-31131-A3	004S88-31140-A3	004S88-31180-A3	Interlocking Armored MIC Plenum Cable, 4 fibers
006C88-31131-A3	006S88-31140-A3	006S88-31180-A3	Interlocking Armored MIC Plenum Cable, 6 fibers
012C88-33131-A3	012S88-33140-A3	012S88-33180-A3	Interlocking Armored MIC Plenum Cable, 12 fibers
018C88-33131-A3	018S88-33140-A3	018S88-33180-A3	Interlocking Armored MIC Plenum Cable, 18 fibers
024C88-33131-A3	024S88-33140-A3	024S88-33180-A3	Interlocking Armored MIC Plenum Cable, 24 fibers

Interlocking Armored Unitized MIC Plenum Cable

036C88-61131-A3	036S88-61140-A3	036S88-61180-A3	Interlocking Armored Unitized MIC Plenum Cable, 36 fibers
048C88-61131-A3	048S88-61140-A3	048S88-61180-A3	Interlocking Armored Unitized MIC Plenum Cable, 48 fibers
072C88-61131-A3	072S88-61140-A3	072S88-61180-A3	Interlocking Armored Unitized MIC Plenum Cable, 72 fibers

INTERCONNECT CABLE

Single-Fiber Plenum Cable

001C38-31131-29	*	001S38-31180-29	Single-Fiber Plenum Cable, 2.9 mm
-----------------	---	-----------------	-----------------------------------

2-Fiber Zipcord Plenum Cable

002C58-31131-24	*	002S58-31180-24	2-Fiber Zipcord Plenum Cable
-----------------	---	-----------------	------------------------------

* Use equivalent SX+ part number.

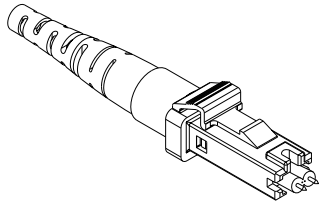
Corning Cable Systems



Fiber Cabling Solutions for Premises Networks

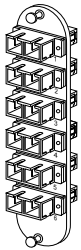
LANscape® Solutions for Xcelerated Bandwidth Applications

LANscape Xcelerate™ and Xcelerate Plus™ Solutions



UniCam MT-RJ Connector

ZA-2441



SC Duplex Panel

CPC-220/5/12

InfiniCor® 600 Part Number	InfiniCor SX 150 Part Number	InfiniCor SX+ Part Number	Description
CONNECTORS			
UniCam® Connector			
92-051-97-P-E	*	92-051-97-P-E-X	UniCam® MT-RJ Connector
95-050-41	*	95-050-41-X	UniCam SC Connector
95-050-98	*	95-050-98-X	UniCam LC Connector
HARDWARE			
Closet Connector Housing Connector Panel			
CCH-CP06-G7	*	CCH-CP06-E7	CCH Connector Panel with three SC duplex adapters
CCH-CP12-G7	*	CCH-CP12-E7	CCH Connector Panel with six SC duplex adapters
CCH-CP12-G1	*	CCH-CP12-E1	CCH Connector Panel with six MT-RJ adapters
CCH-CP12-D3	*	CCH-CP12-E4	CCH Connector Panel with six LC duplex adapters
CCH-CP24-G1	*	CCH-CP24-E1	CCH Connector Panel with twelve MT-RJ adapters
CCH-CP24-D3	*	CCH-CP24-E4	CCH Connector Panel with twelve LC duplex adapters
CCH-CP36-G3	*	CCH-CP36-E3	CCH Connector Panel with three MTP® adapters
CCH-CP72-G3	*	CCH-CP72-E3	CCH Connector Panel with six MTP adapters

* Use equivalent SX+ part number.

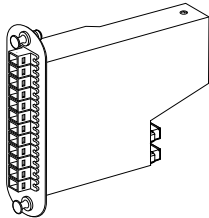
LANscape® Solutions for Xcelerated Bandwidth Applications

LANscape Xcelerate™ and Xcelerate Plus™ Solutions



MT-RJ to SC Duplex Patch Cord

ZA-1931



CCH Module with
MT-RJ & MTP Adapter

ZA-2149



MIC Cable Furcation

CPC-220/6/30

InfiniCor® 600 Part Number	InfiniCor SX 150 Part Number	InfiniCor SX+ Part Number	Description
PATCH CORDS			
575702C5131001M	*	575702S5131001M	SC Duplex/SC Duplex Patch Cord, 1 m
050502C5120001M	*	050502S5120001M	LC Duplex/LC Duplex Patch Cord, 1 m
979702CJ131001M	*	979702SJ131001M	MT-RJ/MT-RJ Patch Cord, 1 m
6969012CJ131001M	*	6969012SJ131001M	MTP® Connector/ MTP Connector Patch Cord, 1 m
PLUG & PLAY™ SYSTEM MODULES			
Closet Connector Housing Plug & Play System Modules			
CCH-CM12-57-69C	*	CCH-CM12-57-69S	CCH Plug & Play™ System Module, SC Duplex/ MTP Connector
CCH-CM12-05-69C	*	CCH-CM12-05-69S	CCH Plug & Play System Module, LC Duplex/ MTP Connector
CCH-CM12-97-69C	*	CCH-CM12-97-69S	CCH Plug & Play System Module, MT-RJ/ MTP Connector
High-Density Plug & Play System Modules			
HDH-CM24-97-69C	*	HDH-CM24-97-69S	HDH Module, 24-fiber, MT-RJ/MTP Connector
HDS-1C72-97-69C	*	HDS-1C72-97-69S	HDH Shelf, 72-fiber, MT-RJ/MTP Connector
PLUG & PLAY SYSTEM TRUNKS			
A696924C8800xxx**	A696924V8800xxx**	A696924S8800xxx**	24-fiber MTP Connector/ MTP Connector
A696972CC800xxx**	A696972VC800xxx**	A696972SC800xxx**	72-fiber MTP Connector/ MTP Connector
A868672C8800xxx**	A868672V8800xxx**	A868672S8800xxx**	72-fiber MT-RJ/MT-RJ
A050572C8800xxx**	A050572V8800xxx**	A050572S8800xxx**	72-fiber LC Duplex/ LC Duplex
A575772C8800xxx**	A575772V8800xxx**	A575772S8800xxx**	72-fiber SC Duplex/ SC Duplex

* Use equivalent SX+ part number.

** xxx = length in feet

Corning Cable Systems



Fiber Cabling Solutions for Premises Networks

LANscape® Solutions for Xcelerated Bandwidth Applications LANscape Xcelerate™ and Xcelerate Plus™ Solutions

Corning Cable Systems



Fiber Cabling Solutions for Premises Networks

Corning Cable Systems LLC • PO Box 489 • Hickory, NC 28603-0489 USA • 1-800-743-2675 • FAX: +1-828-901-5973 • International: +1-828-901-5000
<http://www.corning.com/cablesystems> • Corning Cable Systems reserves the right to improve, enhance, and modify the features and specifications of Corning Cable Systems' products without prior notification. FREEDM, LANscape, MIC, and UniCam are registered trademarks of Corning Cable Systems Brands, Inc. FREEDM/LST, Plug & Play, Xcelerate, and Xcelerate Plus are trademarks of Corning Cable Systems Brands, Inc. InfiniCor is a registered trademark of Corning Incorporated. Discovering Beyond Imagination is a trademark of Corning Incorporated. MTP is a registered trademark of USConec Ltd. All other trademarks are the properties of their respective owners. Corning Cable Systems is ISO 9001 certified. © 2002 Corning Cable Systems. All rights reserved. Published in the USA. LAN-436-EN / May 2002 / 15M